

the EDGAR

FOUNDERSPLACE.COM

1704

South Elevation



4,576 SQ FT

(L1: 3,024 SQ FT, L2: 1,552 SQ FT)

4 BEDROOM, 4 FULL BATH, 2 HALF BATH

MEDIA ROOM

371 SQ FT EXTERIOR DECK (L1)

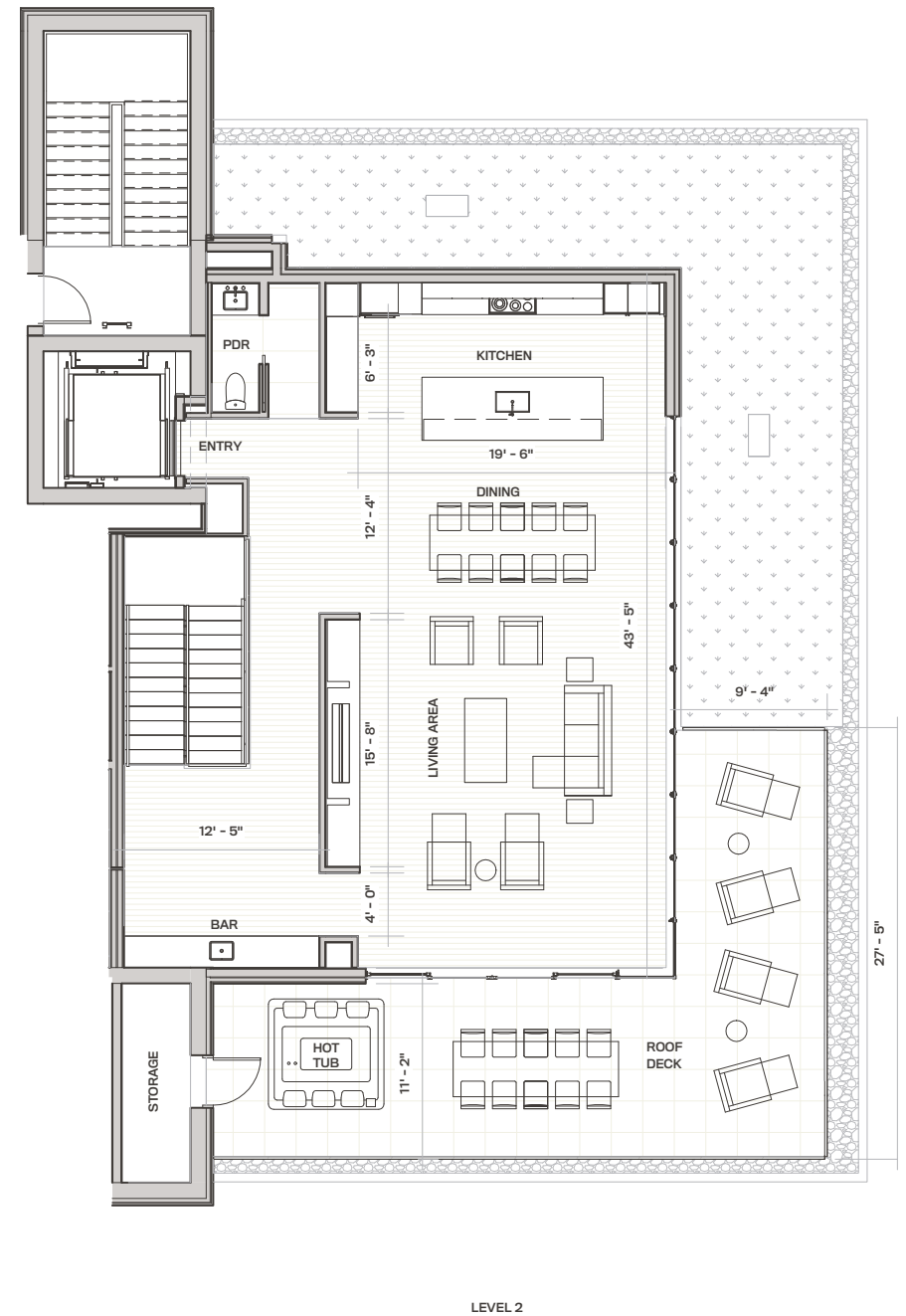
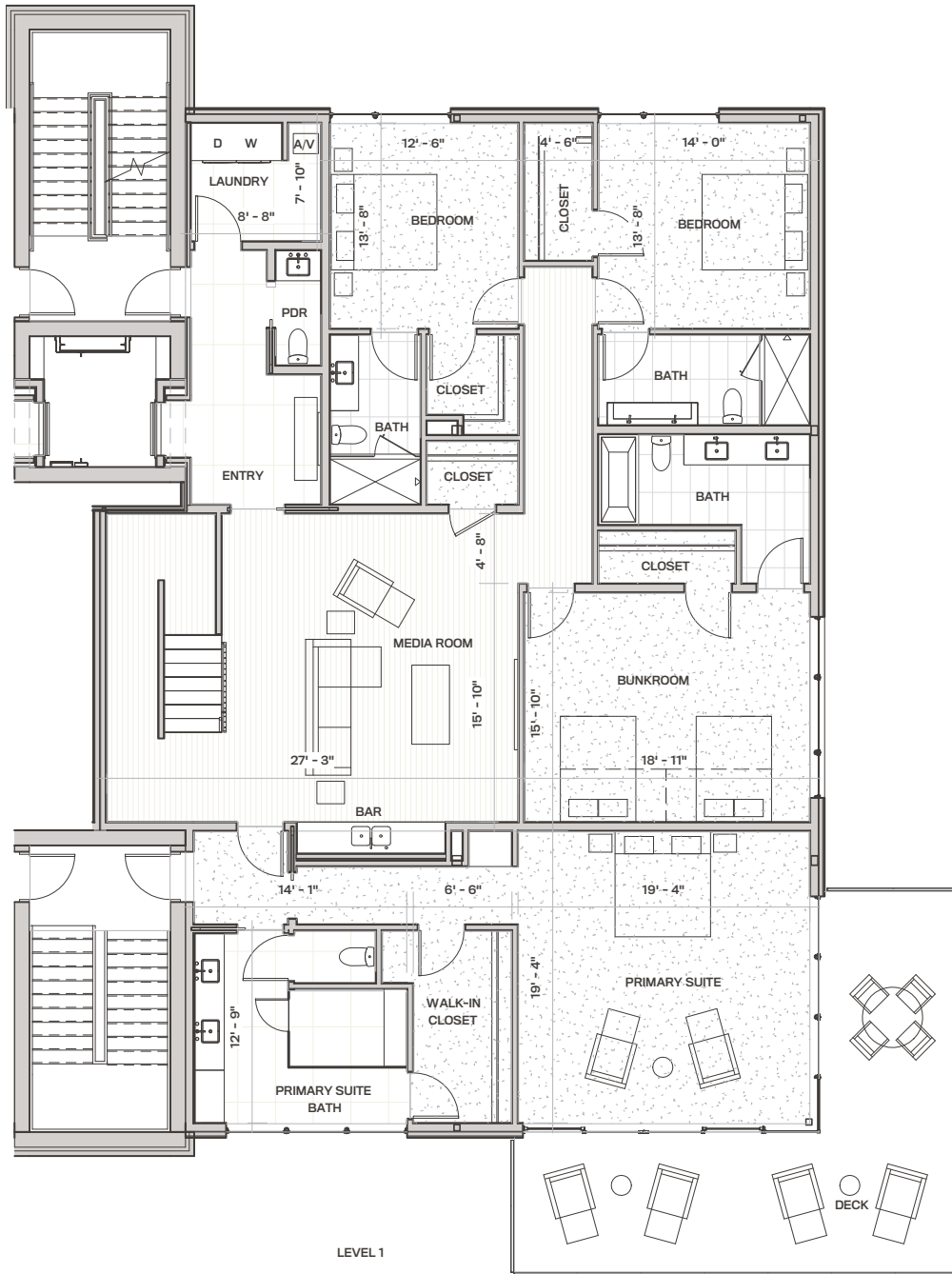
700 SQ FT EXTERIOR DECK (L2)

EDGAR WEST

South Elevation



- ❖ Bi-level penthouse residence with living, dining and kitchen space on the top floor, and bedrooms and media space on the bottom floor
- ❖ Indoor/outdoor integrated living space with sliding doors onto spacious decks
- ❖ Boasts one of the largest outdoor spaces in the project, with a hot tub
- ❖ Floor-to-ceiling windows
- ❖ All bedrooms have private baths
- ❖ Powder room on both top and bottom floor
- ❖ Located at the top floor of the building, this residence is secluded and private, with direct elevator access
- ❖ Large media space and wet bar for entertainment on the lower level
- ❖ Living room steam fireplace
- ❖ Separate bar space perfect for entertaining on the top floor
- ❖ Laundry room with full-size washer and dryer
- ❖ Open, flowing living room, dining area and kitchen design
- ❖ Views of Deer Valley Resort from the primary bedroom, living room, and kitchen and dining space, and views of Deer Crest's protected open space from the other bedrooms
- ❖ Additional outdoor storage on deck
- ❖ Bedroom configures perfectly into bunkroom - comfortable for guests and fun for kid slumber parties
- ❖ Large primary suite with spacious walk-in closet, bath and private deck facing Deer Valley Resort
- ❖ End location that allows extra windows that increase natural light and expand views



1704

EDGAR WEST

IMPORTANT NOTICE: The information, designs, dimensions, finishes, prices and other elements or features contained in these materials cannot be relied upon as accurate and are subject to change without notice. Any square footage measurements indicated herein are approximate only. Square footage calculations may be made in a variety of manners and different methods may yield different results. Furnishings, floor plans, sketches, renderings and other depictions shown herein are for illustrative purposes only and shall not constitute an agreement or commitment on the part of Seller to include any such items in the sale or to deliver the residence in accordance with such illustrations. Interested buyers are advised to inspect the plans and specifications to determine the actual features, dimensions and square footages and to consult with Seller as to other elements important to the purchase. In addition, pursuant to the terms of the Purchase Contract, Seller has reserved certain rights to modify elements of the condominium residence and sale. Interested buyers are advised to consult the specific terms of the Purchase Contract. Founders Place and condominiums are developed and sold by Deer Hollow Development, LLC, which is part of the family of related but independent companies affiliated with East West Partners, Inc. Deer Hollow Development, LLC is a separate, single-purpose entity that is solely responsible for all of its obligations and liabilities, and it is not the agent of East West Partners, Inc., or any other entity. Any reference to "East West" or "East West Partners" in connection with Founders Place merely reflects this limited family of companies affiliation and does not imply that East West Partners, Inc., or any other entity is responsible for the obligations or liabilities of Deer Hollow Development, LLC. "East West" is a service mark of East West Partners, Inc. These materials shall not constitute an offer or solicitation in any state where prior registration is required. Void where prohibited by law. EQUAL HOUSING OPPORTUNITY. All information is subject to change.

© 2021 BHH Affiliates, LLC. An independently owned and operated franchisee of BHH Affiliates, LLC. Berkshire Hathaway HomeServices and the Berkshire Hathaway HomeServices symbol are registered service marks of Columbia Insurance Company, a Berkshire Hathaway affiliate. Equal Housing Opportunity.

BHH
BERKSHIRE
HATHAWAY
HomeServices
Utah Properties

east west partners