

*the* EDGAR

FOUNDERSPLACE.COM

2305

South Elevation



**3,656 SQ FT**

**(ML: 2,526 SQ FT, LL: 1,130 SQ FT)**

**4 BEDROOM, 4-1/2 BATH**

**MEDIA ROOM, PRIVATE SKI ROOM**

**455 SQ FT EXTERIOR DECK (ML)**

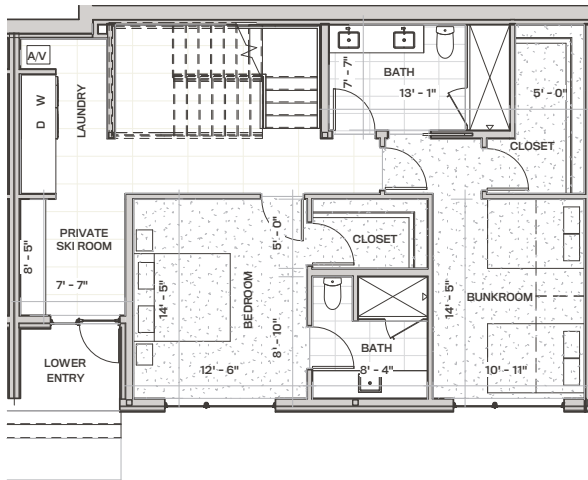
Note: 2 decks, 1 off main and 1 off primary suite



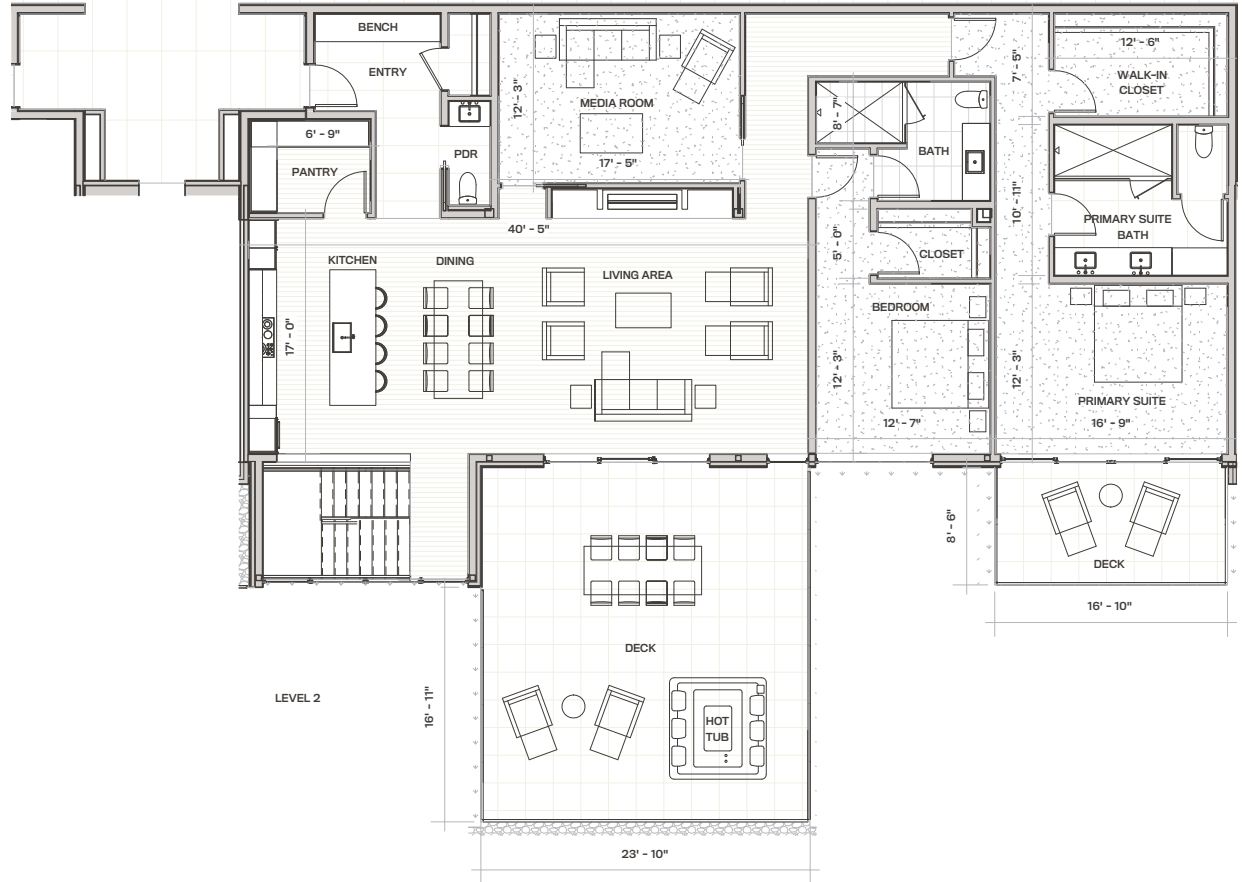
**EDGAR EAST**

South Elevation

- ❖ Bi-level "townhome" residence with bedrooms, living, dining and kitchen space on the top floor, and other bedrooms on the ground floor
- ❖ Indoor/outdoor integrated living space with sliding doors onto spacious decks
- ❖ Floor-to-ceiling windows
- ❖ This residence is located on the ground floor and provides easy access to the outdoors and The Polly and all her amenities
- ❖ All bedrooms have private baths
- ❖ Powder room and coat closet
- ❖ Large media space for entertainment on the top level off the living space
- ❖ Laundry area with full-size washer and dryer
- ❖ Open, flowing living room, dining area and kitchen design, with steam fireplace
- ❖ Spacious pantry off the kitchen for additional storage
- ❖ Main floor provides easy access to Deer Valley Resort just steps from the private entrance
- ❖ Private ski room off the ground floor entrance
- ❖ Views of Deer Valley Resort from the bedrooms, living room, and kitchen and dining space
- ❖ Large bedroom configures perfectly into bunkroom - comfortable for guests and fun for kid slumber parties
- ❖ Large primary suite with spacious walk-in closet, bath and private deck facing Deer Valley Resort



LEVEL 1 (AT GRADE)



LEVEL 2