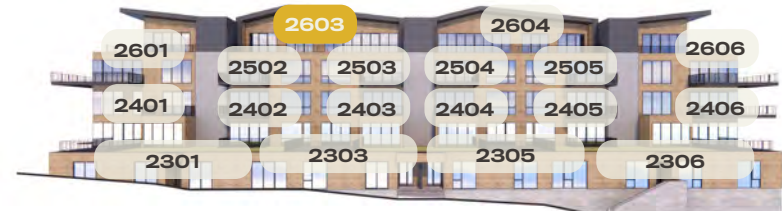


the EDGAR

FOUNDERSPLACE.COM

2603

South Elevation



3,638 SQ FT

4 BEDROOM, 4-1/2 BATH

773 SQ FT EXTERIOR DECK

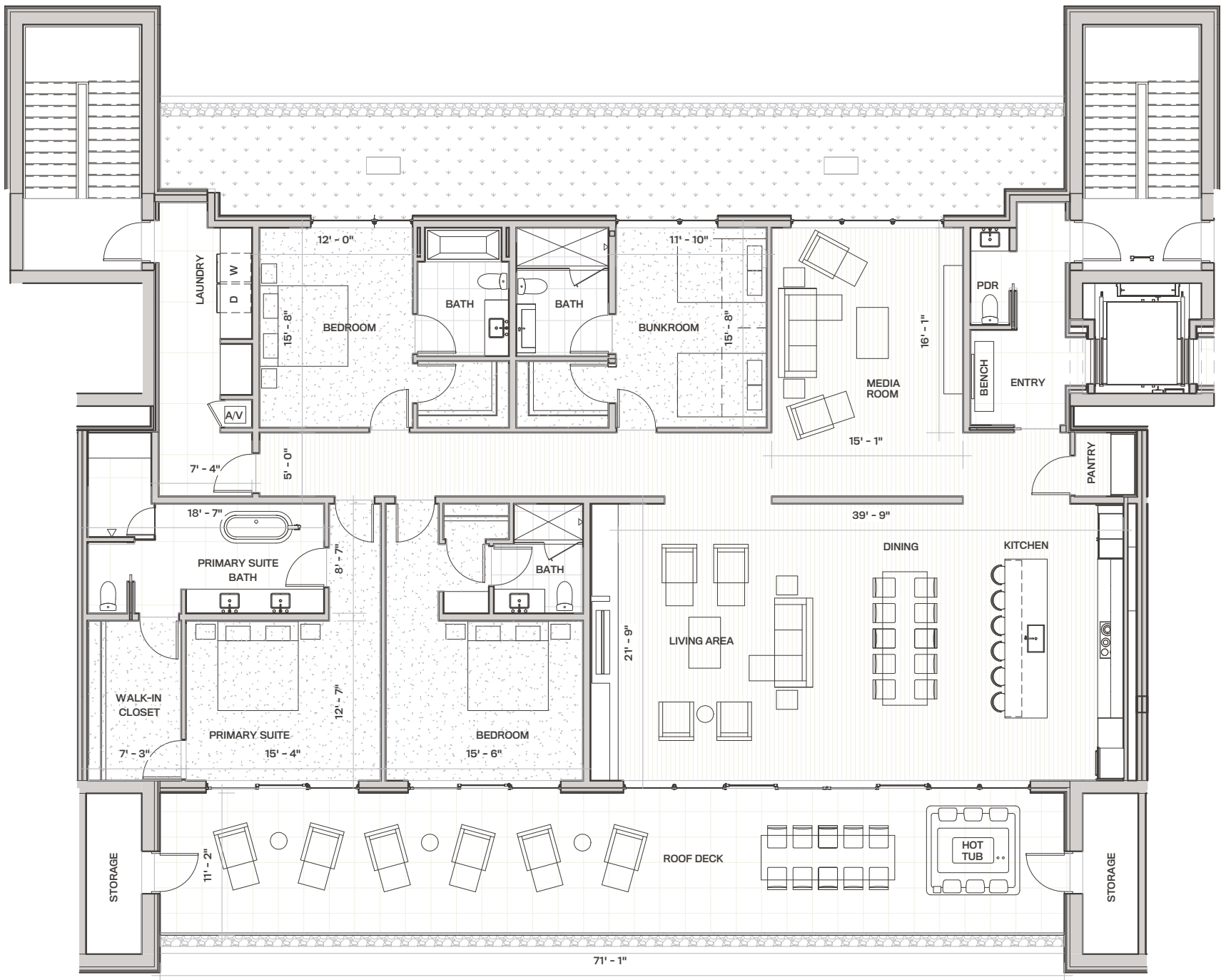
MEDIA ROOM



EDGAR EAST

South Elevation

- Single-level penthouse residence
- Indoor/outdoor integrated living space with sliding doors onto a spacious deck
- Outdoor deck accessible through the living spaces, and primary and secondary bedrooms
- Boasts one of the largest outdoor spaces in the project, with a hot tub
- Formal entry integrated into the living spaces and additional entry point through the laundry room
- Floor-to-ceiling windows
- All bedrooms have private baths
- Powder room
- Located on the top floor, this residence is secluded and private, with direct elevator access
- Large media room for entertainment
- Laundry room with full-size washer and dryer
- Open, flowing living room, dining area and kitchen design
- Spacious pantry off the kitchen for storage
- Living room steam fireplace
- Views of Deer Valley Resort from the primary and secondary bedrooms, living room, and kitchen and dining space, and views of Deer Crest's protected open space from the media room and other bedrooms
- Two additional outdoor storage closets on deck
- Bedroom configures perfectly into bunkroom - comfortable for guests and fun for kid slumber parties
- Large primary suite with spacious walk-in closet, bathroom and sliding glass doors onto the deck facing Deer Valley Resort
- Primary bath suite with soaking tub and separate shower



2603

EDGAR EAST

IMPORTANT NOTICE: The information, designs, dimensions, finishes, prices and other elements or features contained in these materials cannot be relied upon as accurate and are subject to change without notice. Any square footage measurements indicated herein are approximate only. Square footage calculations may be made in a variety of manners and different methods may yield different results. Furnishings, floor plans, sketches, renderings and other depictions shown herein are for illustrative purposes only and shall not constitute an agreement or commitment on the part of Seller to include any such items in the sale or to deliver the residence in accordance with such illustrations. Interested buyers are advised to inspect the plans and specifications to determine the actual features, dimensions and square footages and to consult with Seller as to other elements important to the purchase. In addition, pursuant to the terms of the Purchase Contract, Seller has reserved certain rights to modify elements of the condominium residence and sale. Interested buyers are advised to consult the specific terms of the Purchase Contract. Founders Place and condominiums are developed and sold by Deer Hollow Development, LLC, which is part of the family of related but independent companies affiliated with East West Partners, Inc. Deer Hollow Development, LLC is a separate, single-purpose entity that is solely responsible for all of its obligations and liabilities, and it is not the agent of East West Partners, Inc., or any other entity. Any reference to "East West" or "East West Partners" in connection with Founders Place merely reflects this limited family of companies affiliation and does not imply that East West Partners, Inc., or any other entity is responsible for the obligations or liabilities of Deer Hollow Development, LLC. "East West" is a service mark of East West Partners, Inc. These materials shall not constitute an offer or solicitation in any state where prior registration is required. Void where prohibited by law. EQUAL HOUSING OPPORTUNITY. All information is subject to change.

© 2021 BHH Affiliates, LLC. An independently owned and operated franchisee of BHH Affiliates, LLC. Berkshire Hathaway HomeServices and the Berkshire Hathaway HomeServices symbol are registered service marks of Columbia Insurance Company, a Berkshire Hathaway affiliate. Equal Housing Opportunity.



BERKSHIRE
HATHAWAY
HomeServices
Utah Properties

east west partners