

*the* OTTO  
AT FOUNDERS PLACE

4101

South Facing Views

South Elevation



**2 BEDROOM, 2 BATH**

**2,131 SQ FT**

**MEDIA ROOM**

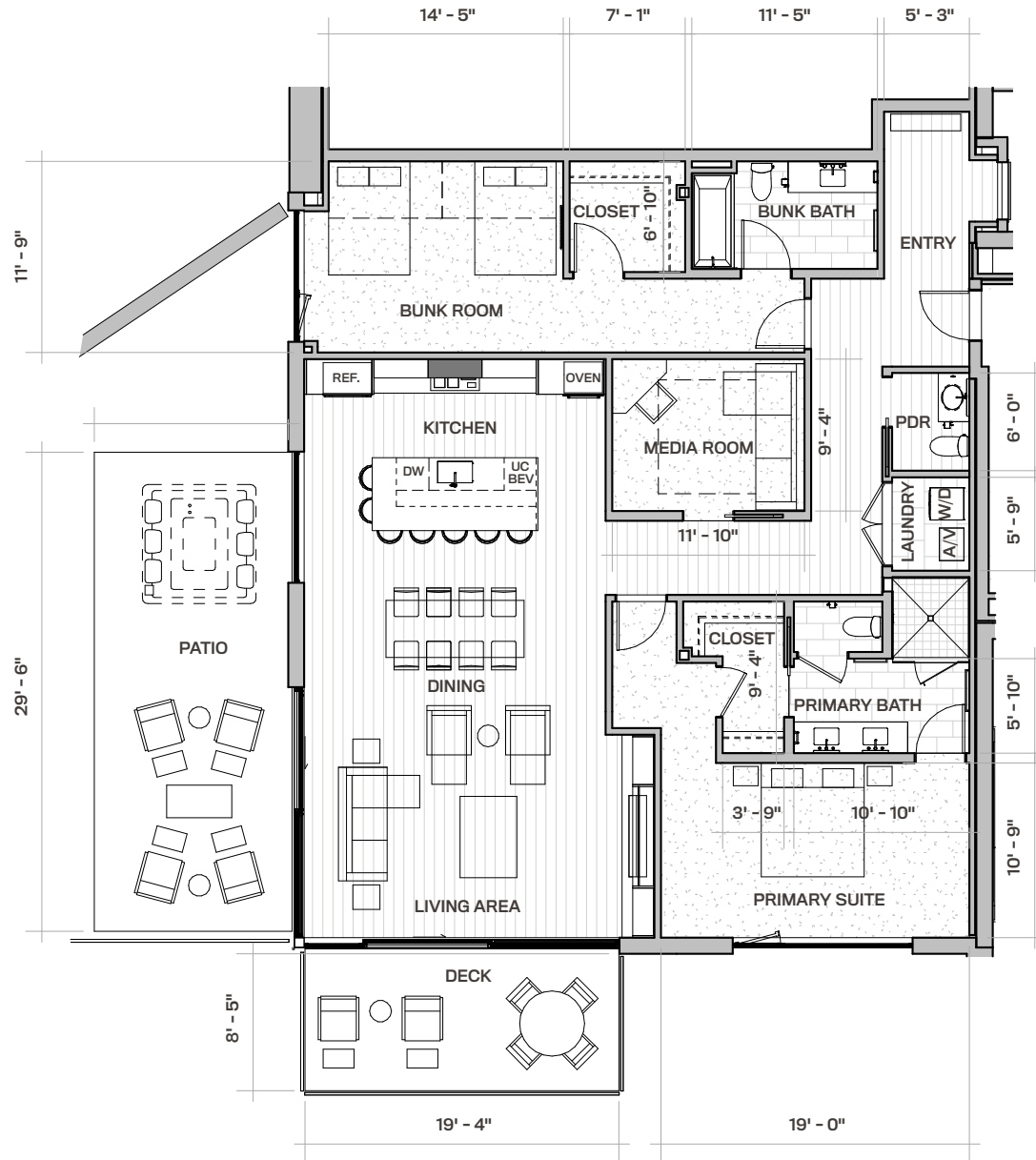
**169 SQ FT EXTERIOR DECK**

**360 SQ FT EXTERIOR PATIO**



- ❖ Floor-to-ceiling windows
- ❖ Laundry room with full-size washer and dryer
- ❖ Steam fireplace in the living area
- ❖ Sliding deck doors create indoor/outdoor living with a view
- ❖ Wrap around seating at island
- ❖ Patio and deck for ample outdoor space
- ❖ Dedicated den area/flex space for work-at-home flexibility and longer stays
- ❖ Views of Deer Valley Resort from the primary suite and living area
- ❖ Direct-to-residence elevator access
- ❖ Corner residence with western and southern views





4101

the OTTO

**IMPORTANT NOTICE:** The information, design, dimensions, finishes, prices, and other elements or features contained in these materials cannot be relied upon as accurate and are subject to change without notice. Any square footage measurements indicated herein are approximate only. Square footage calculations may be made in a variety of manners and different methods may yield different results. Furnishings, floor plans, sketches, renderings and other depictions shown herein are for illustrative purposes only and shall not constitute an agreement or commitment on the part of Seller to include any such items in the sale or to deliver the residence in accordance with such illustrations. Interested buyers are advised to inspect the plans and specifications to determine the actual features, dimensions and square footages and to consult with Seller as to other elements important to the purchase. In addition, pursuant to the terms of the Purchase Contract, Seller has reserved certain rights to modify elements of the condominium residence and sale. Interested buyers are advised to consult the specific terms of the Purchase Contract. Founders Place and condominiums are developed and sold by Deer Hollow Development 3, LLC, which is part of the family of related but independent companies affiliated with East West Partners, LLC. Deer Hollow Development 3, LLC is a separate, single-purpose entity that is solely responsible for all of its obligations and liabilities, and it is not the agent of East West Partners, LLC, or any other entity. Any reference to "East West" or "East West Partners" in connection with Founders Place merely reflects this limited family of companies affiliation and does not imply that East West Partners, LLC, or any other entity is responsible for the obligations or liabilities of Deer Hollow Development 3, LLC. "East West" is a service mark of East West Partners, LLC. These materials shall not constitute an offer or solicitation in any state where prior registration is required. Void where prohibited by law. EQUAL HOUSING OPPORTUNITY. All information is subject to change. 🏠

CHRISTIE'S  
INTERNATIONAL REAL ESTATE  
PARK CITY

east west partners