

the OTTO
AT FOUNDERS PLACE

4401

South & North Facing Views



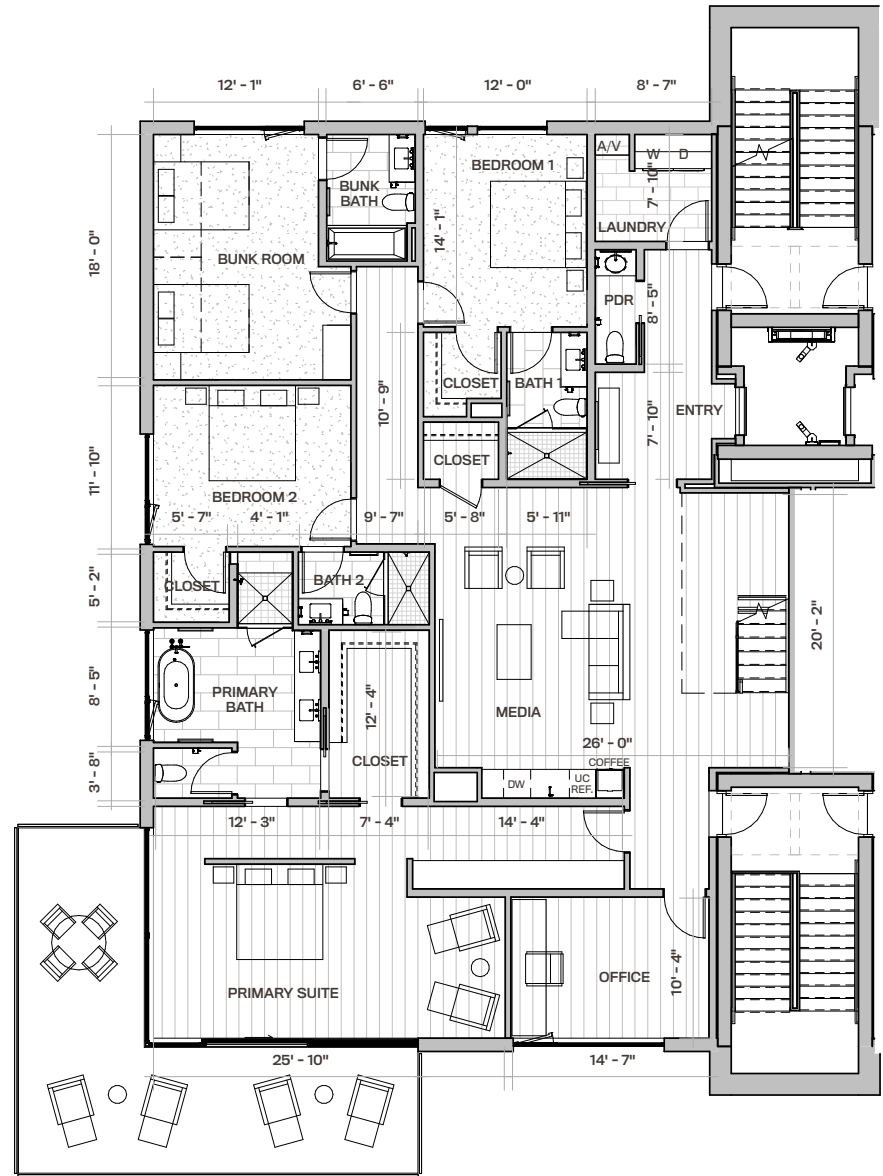
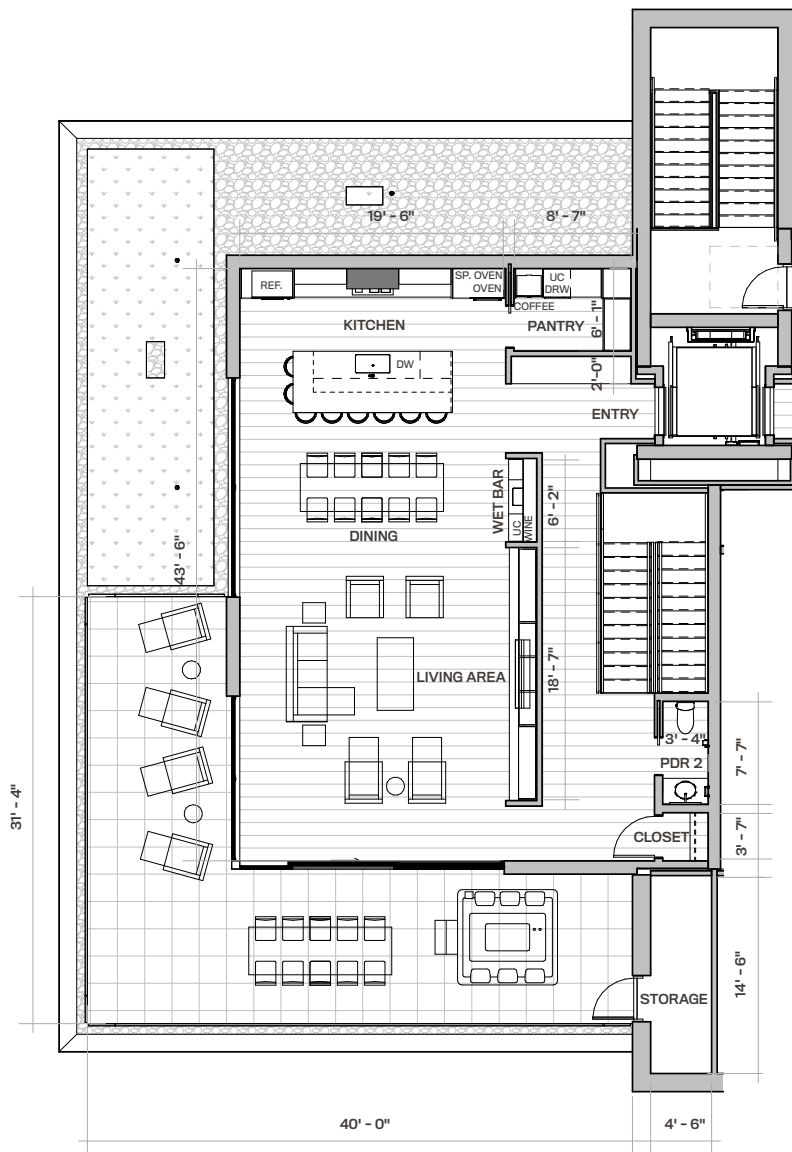
South Elevation



4 BEDROOM, 5 BATH
4,585 SQ FT

<i>Lower Level:</i>	<i>Upper Level</i>
MEDIA ROOM	WET BAR
OFFICE	666 SQ FT ROOF DECK
419 SQ FT EXTERIOR DECK	ADDITIONAL 1/2 BATH

- ❖ Floor-to-ceiling windows
- ❖ Kitchen, living, dining and large wrap around roof deck comprised the entire top level for exceptional entertaining
- ❖ Laundry room with full-size washer and dryer
- ❖ Wet bar in top level dining area
- ❖ Steam fireplace in the living area
- ❖ Secondary living room and media with wet bar at lower level
- ❖ Sliding deck doors create indoor/outdoor living with a view
- ❖ Large primary suite with views of Deer Valley Resort, the Jordanelle Reservoir and Uinta Mountains
- ❖ Direct-to-residence elevator access
- ❖ One bedroom configures perfectly into a bunk room comfortable for guests and fun for kid slumber parties.
- ❖ Powder room and laundry conveniently located in lower-level arrival foyer
- ❖ All bedrooms have ensuite bathrooms
- ❖ Dedicated office with views of Deer Valley Resort
- ❖ Wrap around kitchen island seating
- ❖ Two story living with elevator access to both levels.
- ❖ One of the largest combined private outdoor spaces across all of Founders Place



4401

the OTTO

IMPORTANT NOTICE: The information, design, dimensions, finishes, prices, and other elements or features contained in these materials cannot be relied upon as accurate and are subject to change without notice. Any square footage measurements indicated herein are approximate only. Square footage calculations may be made in a variety of manners and different methods may yield different results. Furnishings, floor plans, sketches, renderings and other depictions shown herein are for illustrative purposes only and shall not constitute an agreement or commitment on the part of Seller to include any such items in the sale or to deliver the residence in accordance with such illustrations. Interested buyers are advised to inspect the plans and specifications to determine the actual features, dimensions and square footages and to consult with Seller as to other elements important to the purchase. In addition, pursuant to the terms of the Purchase Contract, Seller has reserved certain rights to modify elements of the condominium residence and sale. Interested buyers are advised to consult the specific terms of the Purchase Contract. Founders Place and condominiums are developed and sold by Deer Hollow Development 3, LLC, which is part of the family of related but independent companies affiliated with East West Partners, LLC. Deer Hollow Development 3, LLC is a separate, single-purpose entity that is solely responsible for all of its obligations and liabilities, and it is not the agent of East West Partners, LLC, or any other entity. Any reference to "East West" or "East West Partners" in connection with Founders Place merely reflects this limited family of companies affiliation and does not imply that East West Partners, LLC, or any other entity is responsible for the obligations or liabilities of Deer Hollow Development 3, LLC. "East West" is a service mark of East West Partners, LLC. These materials shall not constitute an offer or solicitation in any state where prior registration is required. Void where prohibited by law. EQUAL HOUSING OPPORTUNITY. All information is subject to change. 🏠

CHRISTIE'S
INTERNATIONAL REAL ESTATE
PARK CITY

east west partners